



## InHand Networks

3650 Concorde Pkwy, Suite 200

Chantilly, VA 20151

USA

T: +1 (703) 348-2988

E: [info@inhand.com](mailto:info@inhand.com)

[www.inhand.com](http://www.inhand.com)



# Business Network

Build Extraordinary Networks for Your Bright Future



# InHand Cloud-Managed Networking Solution

## Challenges in enterprise networks brought by digital transformation

Connectivity fosters relationships, empowers businesses, and fuels knowledge acquisition. Innovations in technologies bring infinite possibilities for business development, while also introducing multi-dimensional competition and increased uncertainties. Enterprises still face many challenges in connectivity on the path to digital transformation.



### Difficulties in deploying massive connectivity

Digitalization and globalization have made networks for corporate offices and branches more complex. Traditional networks struggle to meet the demands for quick deployment and business adaptability.



### Challenges in consistent application experience

The modern workplace demands higher network bandwidth and performance. High traffic or link congestion compromises critical business experiences, leading to increased losses.



### Inefficiencies in NetOps

As enterprises expand branches across regions, IT operations become increasingly complex and costly. Traditional WAN solutions can't effectively monitor the status of business applications, leading to inefficient network maintenance.



### Risks in network security

Distributed sites have diversified access to corporate resources. Remote employees using personal devices and networks to access corporate data are vulnerable to cyberattacks without adequate security measures.

## About Us

InHand Networks is a leading IoT solutions provider founded in 2001, dedicated to driving digital transformation across industries and empowering customers to unlock their full potential and achieve accelerated growth.

We specialize in delivering industrial-grade connectivity solutions for diverse sectors, such as enterprise networks, industrial and building IoT, digital energy, smart commerce, and mobility. Our comprehensive product portfolio and services cater to various applications worldwide, including smart manufacturing, smart grid, intelligent transportation, smart retail, etc. With a global footprint spanning over 60 countries, we serve customers in China, the United States, France, Germany, the United Kingdom, Italy, and beyond.



## Solution Values

To address the challenges of traditional enterprise networks in deployment, management, and access experience, InHand launches the **Cloud-Managed Networking Solution**. This solution offers comprehensive network connectivity for enterprise branches, retail stores, and more by enabling agile, scalable, and centralized network management capabilities.



### Highly available networks

We integrate wired, cellular, and Wi-Fi connectivity, enabling redundancy and failover systems to minimize single points of failure.



### Redefine the way IT is managed

We provide a centralized platform to streamline your network management and enable IT personnel to monitor the network anytime, anywhere.



### Improve network agility and continuity

The solution helps to gain agile responses to specific needs for each site with our plug-and-play devices and clouds to maintain productivity.



### Enhance cyber security

Our solution facilitates agile responses to threats across networks, applications, endpoints, and clouds, enhancing protection with data encryption transmission, multi-factor identity authentication, and role-based access control.



## InHand Cloud-Managed Networking Solution

InHand business networking solution encompasses cloud-managed edge routers, Wi-Fi access points, switches, 5G FWA/ODU cellular routers, and the InCloud Manager SaaS platform. By integrating top-tier IT management, IoT, 5G, and AI technologies, we provide fast, secure, and user-friendly network solutions globally, enabling businesses to unlock boundless growth opportunities.



## Our Capabilities

### Excellent Network

- 5G SA/NSA
- Wi-Fi 6 / Wi-Fi 7
- Gigabit Ethernet
- Firewall Security

### Visualized Insight

- Network Status & Quality
- Cellular Signal & Traffic Graphs
- Clients Experience & Topology
- Remote Control & Alerts

### Multi-site Networking

- SD-WAN
- OOBM
- IPSec VPN / Open VPN
- Traffic Shaping

### AI-Powered Network

- AI Configuration
- AI Troubleshooting
- AI Log Analysis
- 24/7 AI Assistant

## InCloud Manager

### AI-Powered Network Management Cloud

#### 1 Easily scale at your own pace

- + Deploy thousands of networks quickly with cloud configuration and automated orchestration to easily scale your network up.
- + Tailor unique configurations to meet the specific needs of each location.
- + Ensure all locations adhere to corporate standards.

#### 2 AI-Driven operation improves your overall IT efficiency

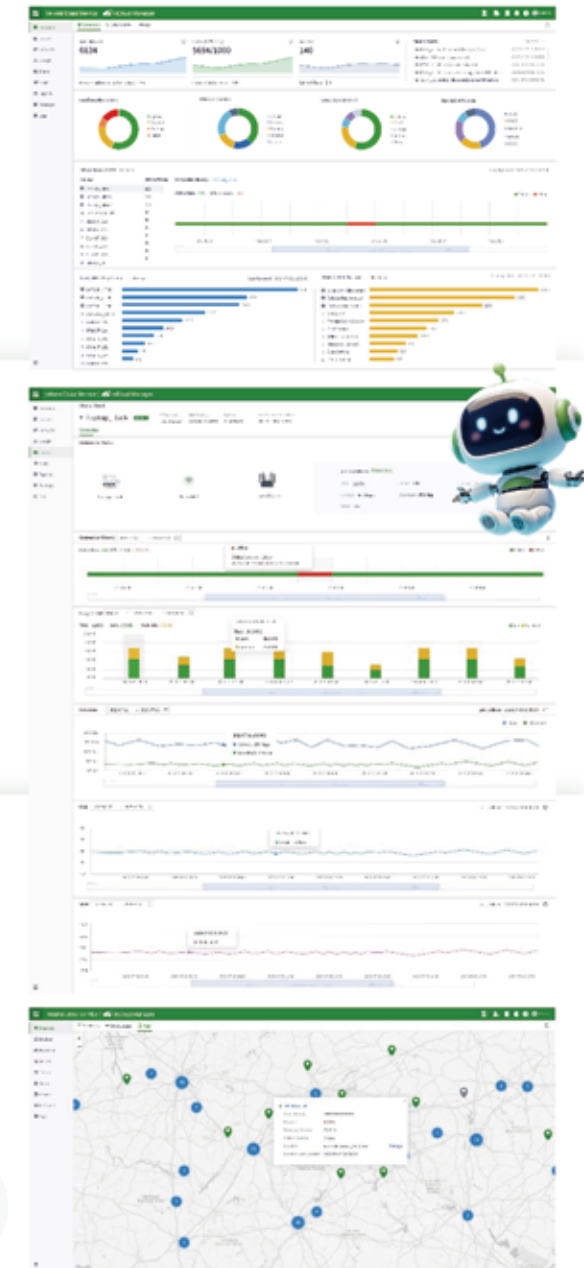
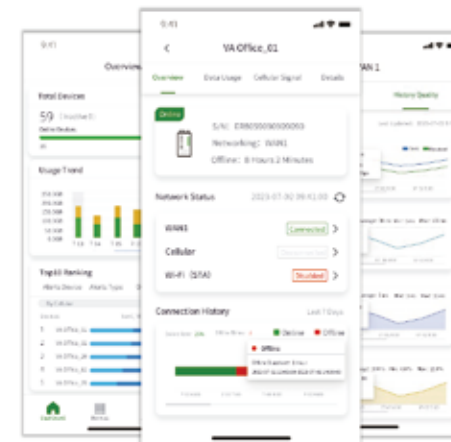
- + Zero-touch provisioning for plug-and-play devices to reduce workload.
- + Intent-based configuration to simplify network orchestration and complexity.
- + AI-Powered control on thousands of distributed sites across regions.

#### 3 Remote Control for Your On-site Terminals

- + Virtualized networking technology ensures no access conflict for distributed sites.
- + Easily build remote access tunnels without modifying local network architecture.
- + Out-of-band management of distributed devices like POS, VoIP, servers, IP cameras, and any other clients over Ethernet.

#### 4 Manage and Monitor from Anywhere

- + Monitor WAN, access, and IoT technologies with end-to-end visibility all in **InCloud Manager**, empowering flexibility for teams.
- + Visualize network performance, traffic patterns, and device health for valuable insights to optimize the network.



InHand provides an end-to-end solution with a versatile and comprehensive product portfolio that is scalable and adaptable to various industries and applications.

# Application 1

A one-stop solution for hybrid networking



## Application Scenarios



## Edge Routers

Cloud-managed Branch Routers

**NEW**

**ER815**  
High-performance Branch Router

- 5G
- 2.5G Ethernet
- Wi-Fi 6
- Network Security

**ER605**  
Cost-effective Branch Router

- 4G CAT 6
- Gigabit Ethernet
- Gigabit Wi-Fi
- Link Backup

**ER2000**  
High-performance Enterprise Router

- 10G SFP+
- 10G Ethernet
- PoE
- Network Security
- 1U Rack-mounted

# LAN Products

Cloud-Managed Network

## ES220

Unmanaged Switches

PoE 5 Ports / 8 Ports

Full Gigabit Ethernet

Sturdy Metal Design



## ES620

Cloud-managed Switch

4\*Combo Ports 24\* PoE Ports

56Gbps Switching Capacity

Cloud-Managed



## EAP600

Cost-effective Wi-Fi 6 AP

Wi-Fi 6 Wi-Fi Portal

Mesh Networking

Network Security



# Application 2

Added-value 5G, especially for connectivity extension to outdoor

**ODU2012**  
Outdoor 5G Wi-Fi7 Router

- 5G SA/NSA, DL 7.01 Gbps, UL 2.5 Gbps
- Outdoor IP67 Protection
- IPsec VPN, L2TP VPN, Firewall Security
- 2\*2.5 GbE WAN/LAN

## Application Scenarios

**Harbor Dock**  
Quality communications for improved dock operations

**Sports Training**  
Exploring full potential through continuous connectivity

**Outdoor Restaurant**  
Reliable network delivers fantastic customer experience

**Oil Field**  
Reliable connectivity in harsh environments

# Application 3

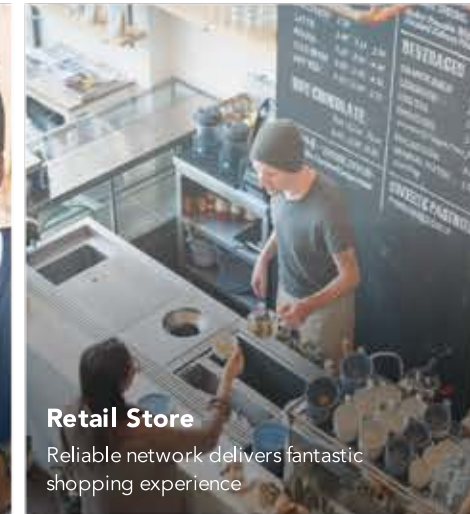
Fixed wireless Internet for SMB connectivity with convenience

## Application Scenarios



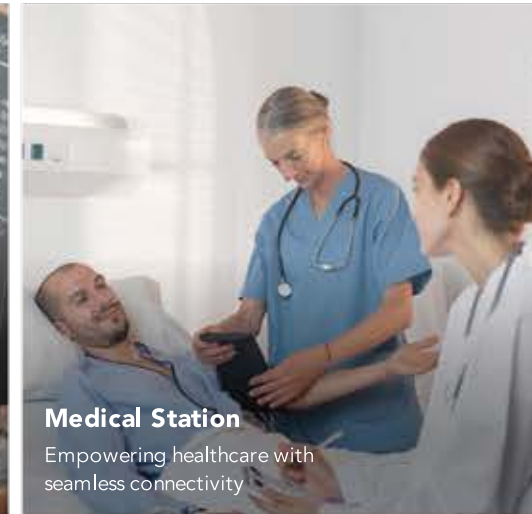
### Rural School

Inspiring learning through seamless connections



### Retail Store

Reliable network delivers fantastic shopping experience



### Medical Station

Empowering healthcare with seamless connectivity



### Government Agency

Building a connected future for public service



### Enterprise Office

Instant access makes business operate swiftly



### Public Safety

Secure connections for safer communities



### CR602

5G Wi-Fi7 Router

5G

Wi-Fi 6

Gigabit Ethernet

Network Security



### FWA12

5G Wi-Fi7 Indoor Router

IPsec VPN, Firewall Security

Wi-Fi7 BE4200 Carrier Aggregation

5G R16, DL 7.01 Gbps, UL 2.5 Gbps



### CPE02

5G Wi-Fi6 Indoor CPE

5G R16, DL 3.4Gbps, UL 1Gbps

Wi-Fi6 AX5400, 128 Clients

1\*2.5GbE WAN, 1\*GbE LAN

# Application 4

Instant connectivity for pop-up network access with plug-and-play

**CR202**  
Portable Cellular Router with Battery

- Portable 4G Router
- Plug-and-Play
- Battery Power Supply for 8 Hours

## Application Scenarios

**Business Travel**  
Experience the freedom to connect with no business boundaries

**Mobile Retailer**  
Elevating outdoor experience with seamless commercial service

**Camping**  
Narrowing the distance between friends

**Outdoor Live Streaming**  
Sharing every moment of your wonderful life

**Sports Event**  
Staying connected while exploring the world

**RV Travel**  
Enjoying every moment with the ones you love

# 5 Major R&D Centers

Rapid Response to Market Demands

Chengdu Beijing Jiaxing Toronto Canada Virginia USA

# 2 Major Manufacturing Centers

Supply Chain: Ensured Production Capacity and Quality



**2** Manufacturing Centers:  
Jiaxing (China)  
Toronto (Canada)

**15** high-efficiency production lines

**11w+** monthly capacity

# 4 Major Warehousing and Technical Support Centers

Multi-location Warehousing and Technical Support

Toronto Canada Virginia USA Dusseldorf Germany Jiaxing China

## Applied in a Wide Range of Scenarios



Smart Manufacturing



Smart Retail



Smart Grid



Smart Cities



Smart Transportation



Renewables



Utilities



Smart Healthcare



Business Internet

## Used worldwide. Proven worldwide.



### Canada

Management of Hydropower Station



### Germany

Smart EV Charging Kiosks



### China

Predictive Maintenance of Air Compressors



### US

Predictive Maintenance of Generators



### Switzerland

Predictive Maintenance of Textile Machines



### Thailand

Flood Early Warning



### Australia

Wireless Water Metering